



# EFIKA

## MAINBOARD

Thank you for your purchase of the EFIKA mainboard. You are reading a short information guide on how to use and install this hardware. For additional information, please visit our website.

### Items of delivery

Please check that your product is complete. The EFIKA product package should include:

- One mainboard
- this information guide
- PCI Riser card (optional)

### Warranty

For information about our warranty policy, please visit the following web address:

[www.genesi-usa.com/warranty.php](http://www.genesi-usa.com/warranty.php)

### CE Conformity

This product is in conformity with the Council Directive 89/336/EEC and 73/23/EEC of the European Union.

### FCC Conformity

This product complies with the American FCC part 15 class B.



### Manufacturer

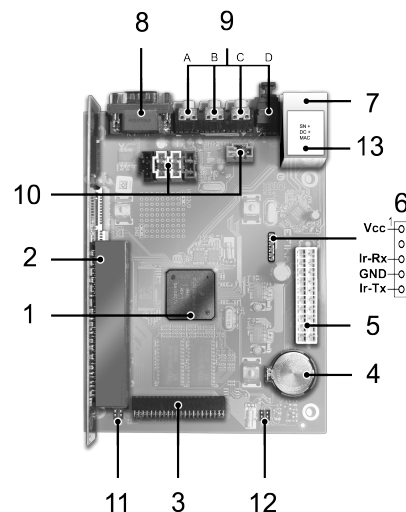
**Genesi USA Inc.**  
200 Patterson Ave.  
San Antonio, TX 78209  
USA

Internet: [www.genesi-usa.com](http://www.genesi-usa.com)

## PRODUCT OVERVIEW

Below you will find an overview of all important product features. In order to find out where the mentioned components are located on your mainboard, please note the corresponding numbers and look for them on the graphic far below.

1. Freescale MPC5200B PowerPC SoC 400MHz  
(32 Bit PowerPC with FPU, 603e processor core (e300),  
Dhrystone 2.1, 760 MIPS)  
  
with access to 128MB DDR RAM (266MHz) of main memory.
2. PCI slot (compatible to 33MHz and 66MHz PCI 2.2 3.3 volt,  
optionally includes a 90 degree AGP Riser card)
3. 44 pin IDE connector (2mm 90 degree port for connecting a  
2.5 inch notebook harddisk drive)
4. RTC clock (Real-time clock, system management, power on  
/ off)
5. ATX connector for use with an industry standard power supply  
unit.
6. Infrared port (IRDA - for communication via infrared  
with speeds from 2400 bps upto 4 Mbps; requires additional  
infrared receiver hardware to be used)
7. 2x USB ports (1.1 automatic high speed/ low speed recognition,  
OHCI)  
  
10/100Mbit/s ethernet (Realtek 8201 Phyceiver)
8. 1x RS232 serial port (D-SUB9)
9. Audio connectors: **A** – Microphone, **B** – Audio In, **C** – Audio Out  
(headphones / speakers), **D** – optical S/PDIF out connector
10. Internal audio ports – from left to right (see illustration): Audio In  
(CD\_IN), Audio In (VID\_IN), Audio In (AUX\_IN), Headphones(HP)  
Microphone (MIC) 90° rotated
11. Two pins each for power LED (PL – left) and harddisk LED  
(HD – right).
12. Two pins each for the reset switch (RS – left) and power switch  
(PS – right)
13. Information sticker which includes the following details: Your  
product's serial number (SN), date of manufacturing (DC) and  
MAC ID address (MAC).



## IMPORTANT NOTICES

If you have no in-depth knowledge on how to assemble computers, please have a qualified professional do it for you! Faulty installation can damage your EFIKA mainboard as well as all connected hardware.

Install your mainboard only if the main power is unplugged and there is no flow of electricity. Otherwise, you are risking DANGER TO LIFE!

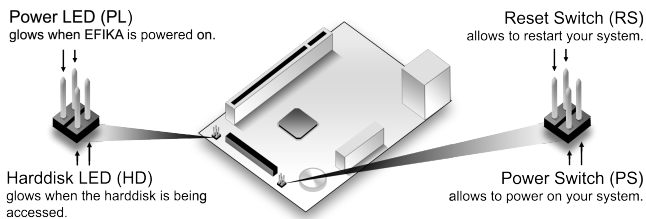
Electrostatic discharge can damage electronic components permanently. Please take appropriate security measures, such as wearing an anti-static wristband.. Also, assemble your hardware at a workplace which is protected from electrostatic interference.

## HARDWARE INSTALLATION

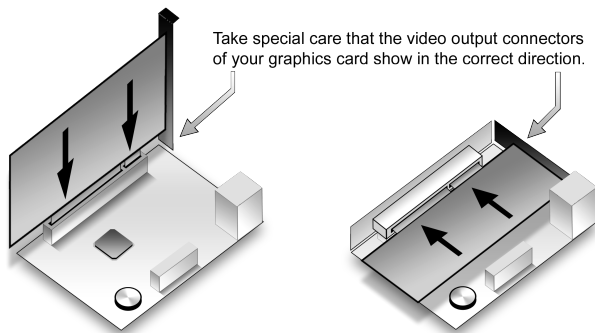
1. Install 2.5 inch hard disk drive as described in its bundled user manual. Firmly mount the hard disk on the mainboard with the fitting screws provided.

2. Install your EFIKA in an adequate system case. Insure that the mounting screws fit properly into the mounting brackets of the case.

3. Connect the power / reset buttons and LED lights of your case with the mainboard. Please note the information on the following graphic:



4. OPTIONAL - install PCI extension card. Insure the card is provided with 3.3 Volts in operation and mounted as shown in the illustration below.



Owners of low profile AGP graphics cards may use the optional Riser adapter to use their graphics card with the on-board PCI extension slot. Please make also sure that your graphics card runs on 3.3 Volt and is plugged in as seen on the illustration above.

**Important:** By improperly installing PCI or AGP hardware or using cards which do not operate at 3.3 Volt, you will damage your EFIKA mainboard. Please take notice that this will invalidate the guaranteed product warranty immediately.

5. Plug the ATX cable of your power supply unit into the ATX connector on the mainboard. Make sure you check beforehand that your power supply fits the minimum requirements for the operation of all your chosen system components.

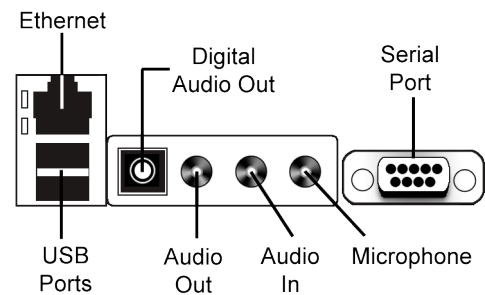
**Important:** Please make absolutely sure that the power plug of your power supply is not connected to an electrical outlet.

6. Connect your mouse and keyboard to the USB ports on the back of your computer case. Please note that USB cables can only be connected in a specific direction. If you cannot easily fit the connector in the port, rotate your USB connector by 180 degrees and try again.

**Important:** Depending on the type and design of your mouse / keyboard you may be required to use a USB hub. This also applies if you intend to use more than two USB devices in parallel.

7. In order to use the sound capabilities of the EFIKA mainboard, plug your headphones, sound speakers, microphones or other audio sources into the appropriate ports on the back of your computer case.

8. In order to connect your system with a wired network, please plug an ethernet cable into the appropriate port on your computer's back panel.



9. As the final step of the installation, insert the power plug into your power supply unit and a wall outlet. Your EFIKA system is now fully assembled and ready for operation.

## Miscellaneous

For inspecting the Open Firmware boot functions and the output of your running Linux kernel, you may use a serial connection with another computer to access this information. Please connect a serial cable to your EFIKA and configure your terminal software to use the setting 115200 8N1.

The same method also allows to access the EFIKA without a keyboard and/or graphics adapter.

## SOFTWARE INSTALLATION

In order to simplify the installation of Linux on your EFIKA, we provide Linux images for download which have been validated on the EFIKA. Furthermore, we also supply up to date installation instructions. In order to access these files, please visit the following website.

[www.efika.info](http://www.efika.info)

For news about product updates and important customer notices, please visit the same web address.